



Application Engineering – AppScribe

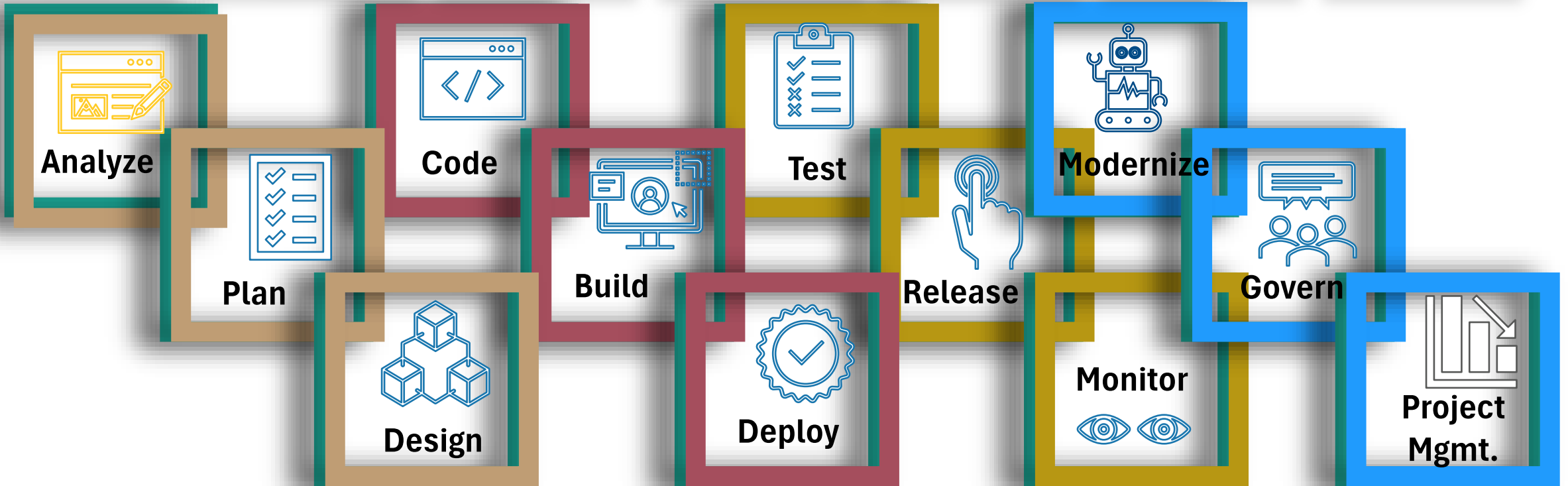
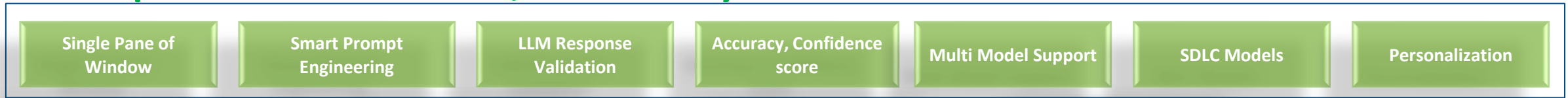


September 2024

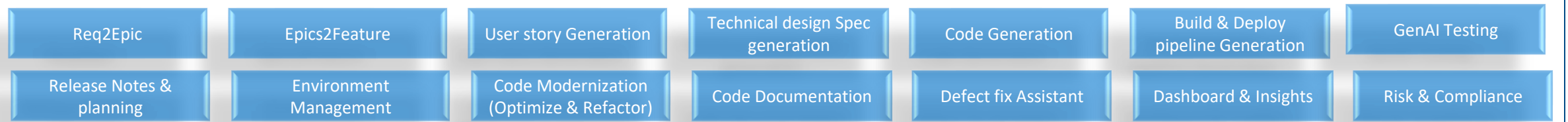


AppScribe for Acceleration, Automation, Orchestration across SDLC

Concept to value realization, Powered by GenAI



.... Use cases across SDLC phases



Overview of AppScribe

What is AppScribe?

AppScribe is the **Gen AI Platform** for entire **SDLC Acceleration, Automation and Orchestration.**

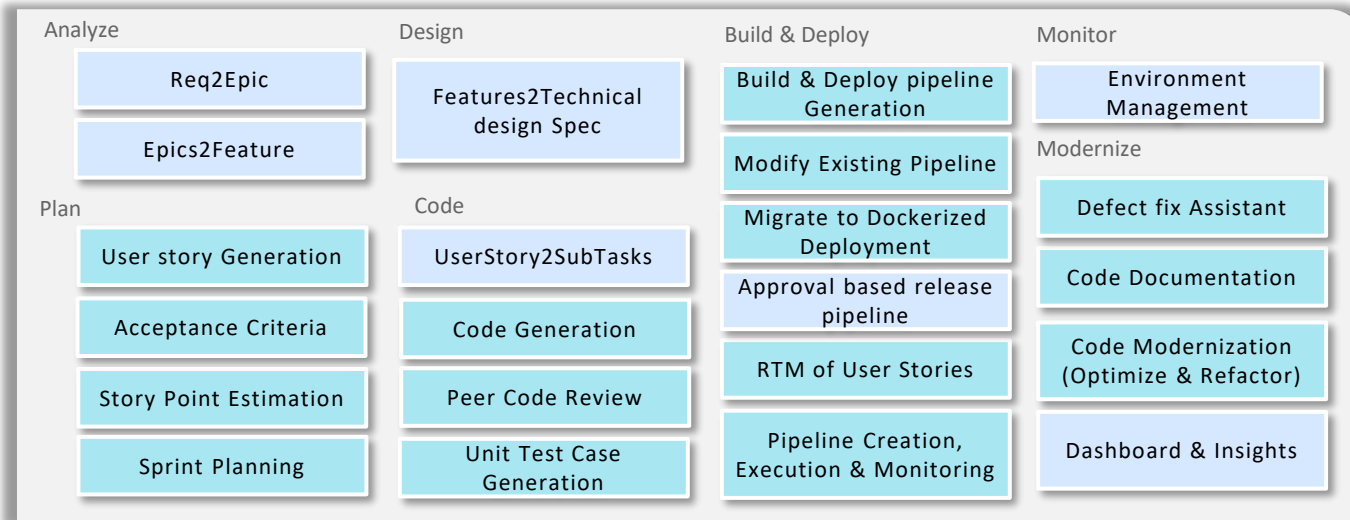
Who are the Target Personas?

- Scrum Masters
- Developers
- Dev Ops Engineers
- Support Engineers (L3 / L4)
- Project Managers

Key Features

- SDLC in a **Single Pane of Window**
- **Inbuilt Smart Prompt** Engineering
- **Multi Model** Support
- **Persona** Based Approach
- SDLC Tools Bi-Directional Integration
- **Human Augmented Design**

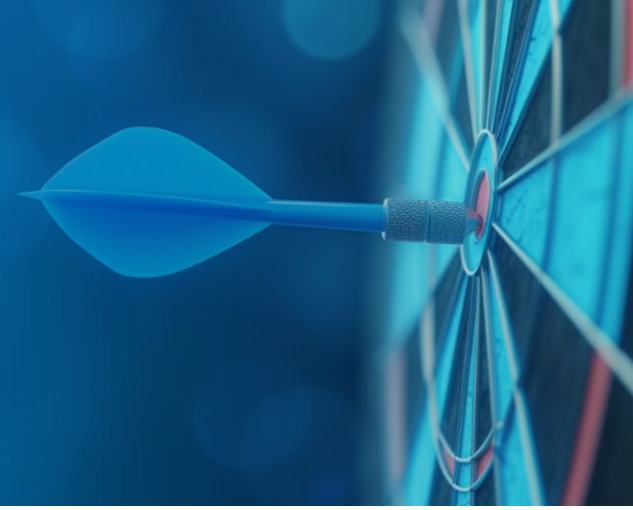
Key Use Cases across SDLC Phases . . .



- ✓ AppScribe currently supports only **Custom Applications Development** like React, Angular, Java, .Net
- ✓ **Limited Applicability for Legacy** technologies like COBOL, AS400, AEM etc.,
- ✓ Tools Integrated – **JIRA, Azure Boards, Jenkins, Azure DevOps.**
- ✓ Generic **Prompts** may need **customization** for Client specific frameworks and requirements
- ✓ **Up to ~30% velocity acceleration** expected for the overall applications / projects based on use cases applicability

Case in Point: Gen AI Assisted Forward Engineering

American Travel Technology company



Objective:

- The customer was modernizing their legacy applications to latest technology landscape
- As part of the modernization exercise the product specification documents were reverse engineered from the legacy code
- As per the modernization activity, the forward engineering of converting the product specifications into user stories to expedite the development process

Solution :

- Leverage AppScribe's Planning Module which leverages Generative AI to address SDLC related use cases
- Use Case: Requirements to User Stories Generation
- Gen AI Stack:
 - Google Vertex AI
 - LLM: Text-Bison

Expected Benefits:

Improved developer productivity & accelerate sprint planning by 30%

AppScribe Infra Requirements for POC / Single Project

Infra Requirements

Requirements Container Based Deployment

- **Bare Minimum POD** / Cluster with managed MongoDB services
- **Autoscaling** should be enabled based upon the usage
- GenAI cloud subscriptions – Azure Open AI GPT 3.5 / Google vertex AI

OR

Requirements VM Based Deployment

- 1 Linux server, 1 Windows server
- GenAI cloud subscriptions – Azure Open AI GPT 3.5 / Google vertex AI

Requirement	Azure Container Description
AppScribe Image	Bare Minimum POD with managed Mongo DB service and autoscaling enabled
Gen AI Cloud Subscription	Azure Open AI - GPT 3.5 Turbo 16K Model / Google Vertex AI – Code / text Bison / Gemini pro

Requirement	Azure Server Description
AppScribe Hosting Server 1	1 E8as v4 (8 vCPUs, 64 GB RAM) (1 year reserved), Linux, (Pay as you go); 1 managed disk – S20; Inter Region transfer type
AppScribe Hosting Server 2	1 E4as v5 (4 vCPUs, 32 GB RAM) (1 year reserved), Windows, (Pay as you go); 1 managed disk – E40 (512 GB HDD); Inter Region transfer type
Gen AI Cloud Subscription	Azure Open AI - GPT 3.5 Turbo 16K Model / Google Vertex AI – Code / text Bison / Gemini pro

***Gen AI Cloud Subscription cost will be based on usage**